

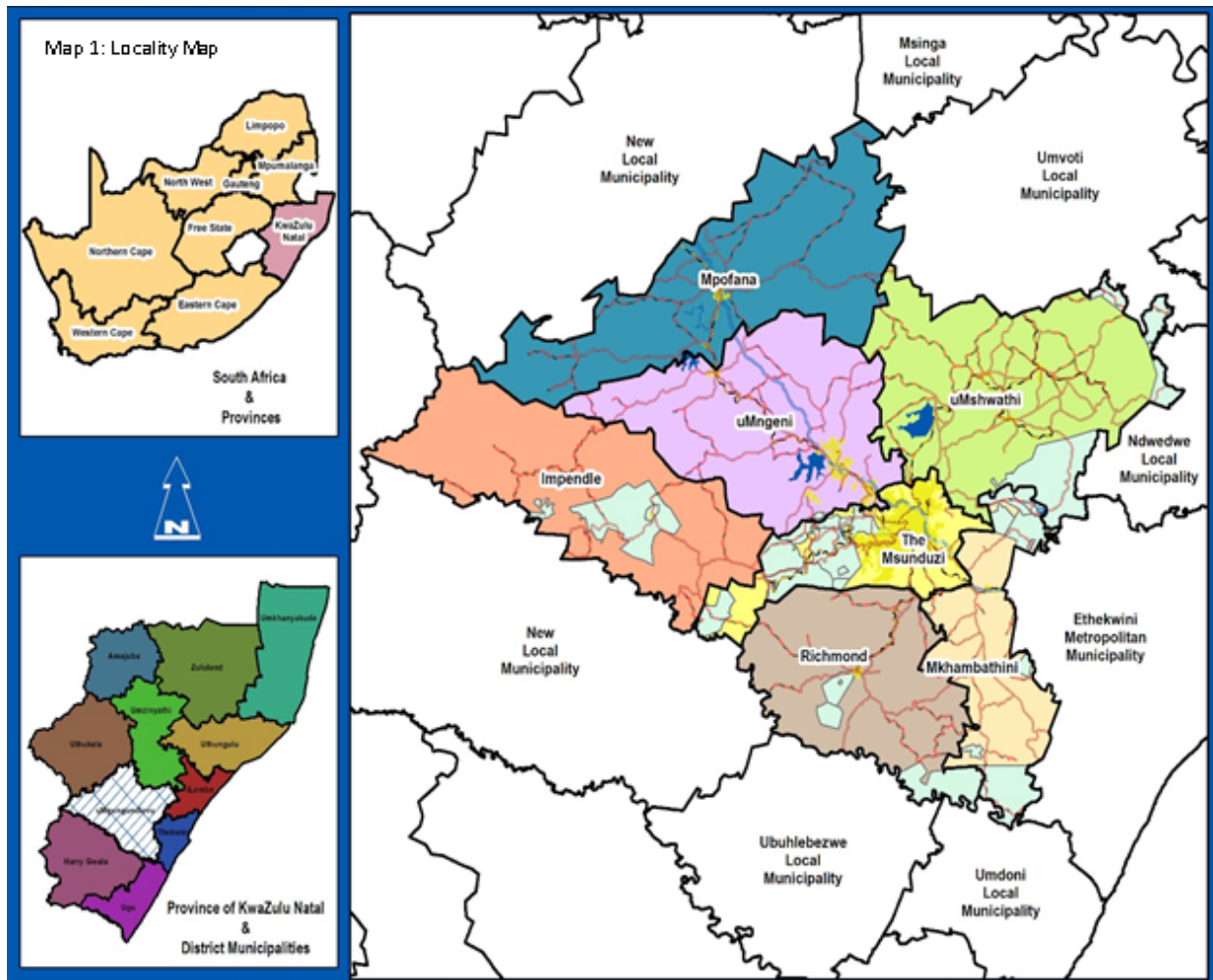
# **Municipal Investment Directory**

*Mkhambathini  
Local Municipality*

**2021-2022**



## Municipal Investment Directory: Mkhambathini Local Municipality



**Figure 1:** Location of Mkhambathini Local Municipality

Mkhambathini local municipality is one of seven local municipalities comprising the uMgungundlovu District Municipality. Towns within the municipal boundaries include Camperdown, Eston and Mid Illovo. Our municipality covers an area of approximately 917km<sup>2</sup>. We are situated 24.1 km away from Pietermaritzburg, the capital city of KwaZulu-Natal. The N3 national road traverses the municipality linking our municipality to Durban in the east, Pietermaritzburg in the west and the Gauteng Highveld in the North. Our location makes us an investment destination of choice due to our strategic location, natural beauty, labor supply and easily accessible land parcels.

## Economic Sectors of the Municipality

The main economic sectors of the municipality include: Agriculture, Tourism, Manufacturing, and Small Macro and Micro Enterprises (SMMEs). In terms of agriculture Industry out current interests are: vegetables; maize, sugarcane, poultry, beef and pig farming.

We have a bustling tourism economy which is centered on African experiences, with attractions such as the Tala Game Reserve, Nagle Dam, Table Mountain, Pathways Yoga Retreat and Umgeni Valley. Our municipality also has a keen interest in adventure tourism, eco- tourism and agro tourism. We are also home to a wide variety of wedding venues

## Catalytic Projects

Our municipality has several catalytic projects that have been prioritized.

<b>Mkhambathini Catalytic Projects (Internal and External)</b>				
<b>No</b>	<b>Project</b>	<b>Intended outcome</b>	<b>Type of Funding</b>	<b>Responsible Stakeholder</b>
<b>1.</b>	N3 Corridor Development Projects			
<b>1.1</b>	N3 Upgrade	<ul style="list-style-type: none"> <li>Improved investment route/ transport network to attract more industries in the area for job creation and economic development</li> </ul>	External (SANRAL)	SANRAL
<b>1.2</b>	Bulk Wastewater Treatment Works	<ul style="list-style-type: none"> <li>To attract business, housing and industrial development</li> </ul>	External	UMDM & Umgeni Water
<b>2.</b>	Tourism Development Projects (Adventure Tourism and Tourism)			
<b>2.1</b>	Upgrading of Roads: P477, P556, AE3611, P26 and L823 and P21-1	<ul style="list-style-type: none"> <li>Linking key areas for improved eco-adventure tourism</li> </ul>	Requires Funding	

<b>Mkhambathini Catalytic Projects (Internal and External)</b>				
<b>No</b>	<b>Project</b>	<b>Intended outcome</b>	<b>Type of Funding</b>	<b>Responsible Stakeholder</b>
<b>2.2</b>	Mkhambathini Online Tourism Brochure	<ul style="list-style-type: none"> <li>• Creation of a platform for marketing of local tourism businesses (Accommodation, tourism destination sites and things to do locally)</li> <li>• Marketing of Mkhambathini Municipal Area</li> </ul>	Internal	Mkhambathini Municipality
<b>3.</b>	Agricultural Development Projects			
<b>3.1</b>	Mkhambathini Agri-Parks (Farmer Support Units)	<ul style="list-style-type: none"> <li>• Provision of a municipal based farmer support unit (FSPSU)</li> <li>• Creation of an agricultural produce market for local emerging farmers.</li> <li>• Training and Development of emerging farmers to expand to the bigger market.</li> <li>• Opportunities in the agri-processing sector unleashed</li> </ul>	External. Working on securing a grant for internal running of the project.	UMEDA (FSPSU & RASET)



## Land available for development in Mkhambathini Municipality

### 1. Lot 102 Camperdown

**Available services:** Water and electricity

**Size:** 6.19ha

**Zoning:** Medium Impact Mixed use



### 2. Rem of Portion 90 Camperdown

**Available services:** water and electricity

**Size:** 22.8ha

**Zoning:** Medium impact mixed use and residential





### 3. Lot 70 Camperdown

**Services available:** Water and electricity

**Size:** 1533m<sup>2</sup>

**Zoning:** Medium impact mixed use

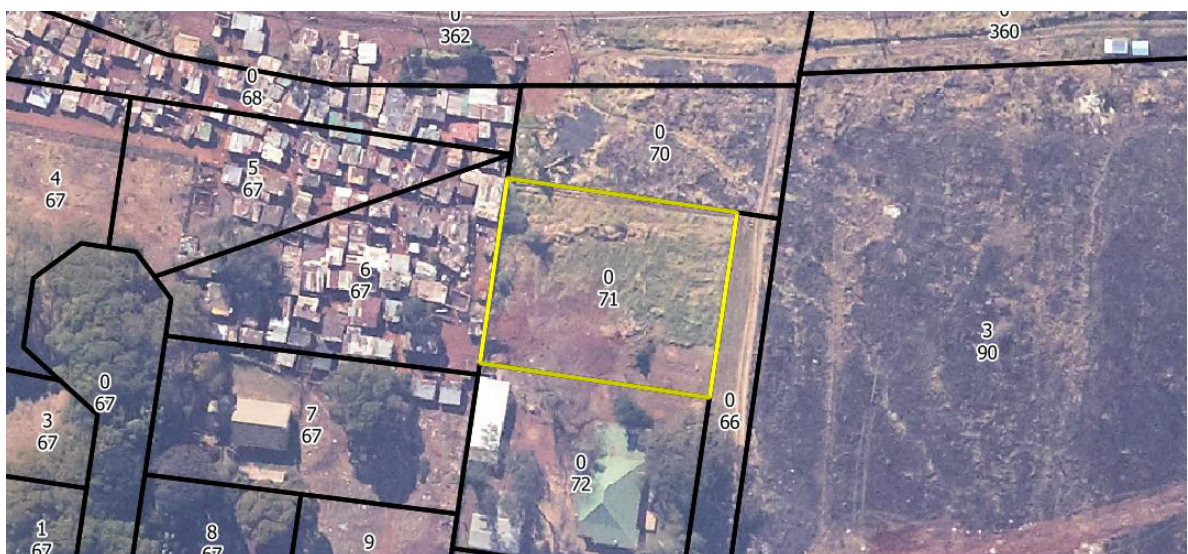


### 4. Lot 71 Camperdown

**Services available:** Water and electricity

**Size:** 2023m<sup>2</sup>

**Zoning:** Medium Impact mixed use





## 5. Erf 57 of Camperdown

**Available services:** Water and electricity

**Size:** 1881m<sup>2</sup>

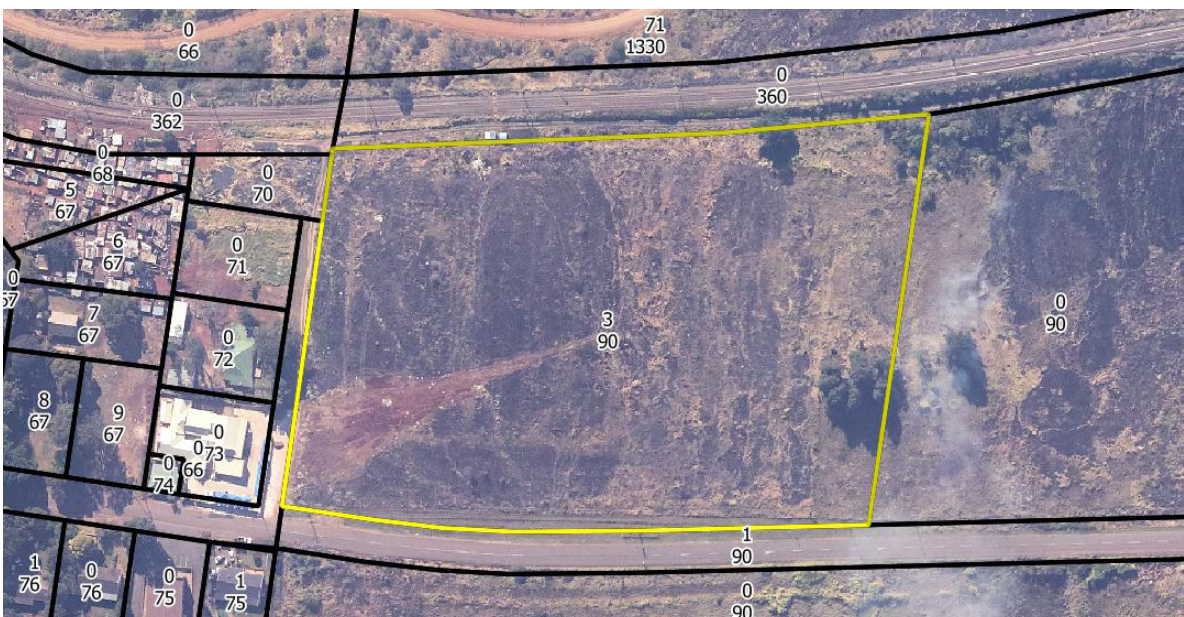
**Zoning:** medium impact mixed use



## 6. Portion 3 of Erf 90 Camperdown

**Available services:** No available services presently.

**Zoning:** High density residential





## 7. Portion 5 of Erf 67 Camperdown

**Available services:** No services currently

**Size:** 1718m<sup>2</sup>

**Zoning:** Medium impact mixed use

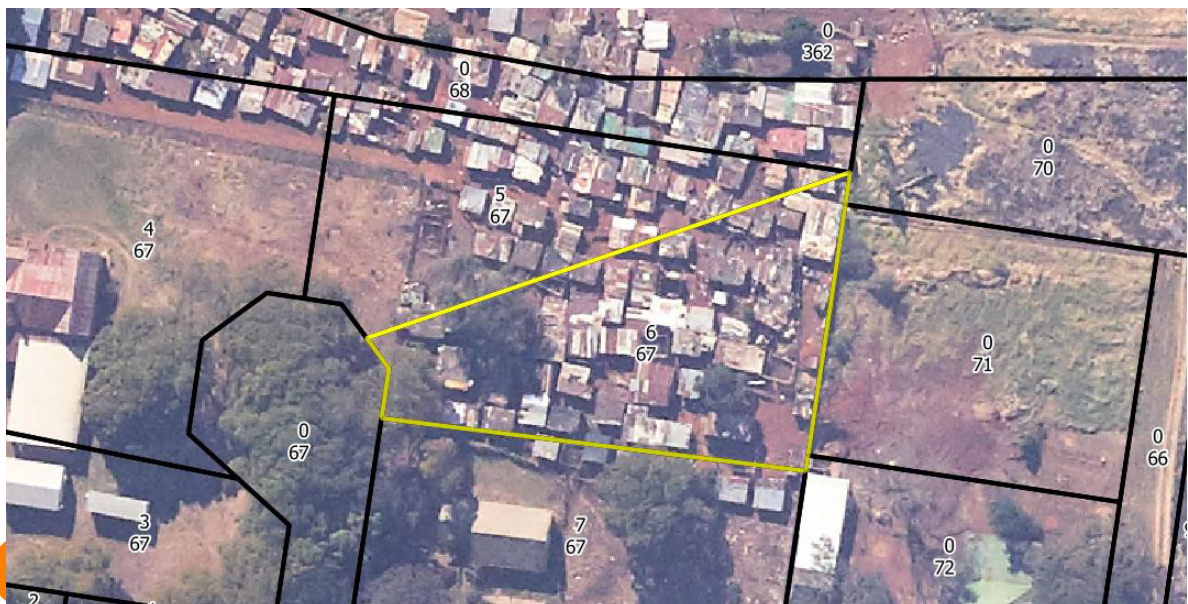


## 8. Portion 6 of Erf 67 Camperdown

**Available services:** no services but water and electricity is possible

**Size:** 2136m<sup>2</sup>

**Zoning:** Medium impact mixed use





## 9. Portion 9 of Erf 67 Camperdown

**Available services:** No services available currently

**Size:** 1770m<sup>2</sup>

**Zoning:** Medium Impact Mixed used

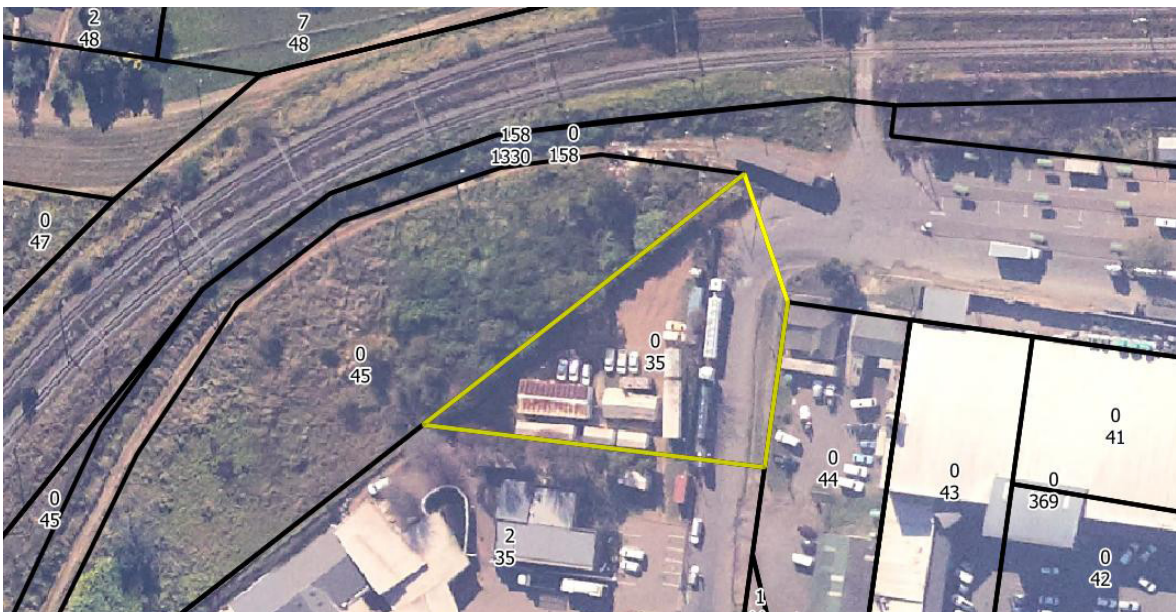


## 10. Lot 35 Camperdown

**Available services:** Water and electricity

**Size:** 2553m<sup>2</sup>

**Zoning:** Medium impact mixed use





## 11. Lot 120 Camperdown

**Available services:** Water and electricity

**Size:** 8.61ha

**Zoning:** Core mixed used



## 12. Lot 31 Umlaas Road

**Available services:** Water and electricity

**Size:** 40 hectares

**Zoning:** Light industry









## 15. Portion 853 Of the Farm Vaalkop and Dadelfontien No. 885

**Available services:** Water and electricity

**Size:** 10 hectares

**Zoning:** Light industry



## 16. Portions 9 of Erf 41 to portion 17 of Erf 41

**Available services:** Water and electricity

**Size:** 6.4 hectares

**Zoning:** Special Zone 1 ( mixed use)





















## **Municipal One Stop Shop**

We have two dedicated municipal officials who can assist you with all your development/ investment related queries:

**Elaine Donaldson:** Manager Town Planner

**Tel:** 0317859341 or Fax – 0317852121

**Email:** DonaldsonE@mkhambathini.gov.za

**Pretty Ngcobo:** Manager Local Economic Development

**Tel:** 0317859336 or Fax – 0317852121

**Email:** led@mkhambathini.gov.za



